

City of
Neptune Beach

116 First Street • Neptune Beach, Florida 32266-6140
(904) 270-2400 • FAX (904) 270-2417 • Suncom 852-2400



MEMO

TO: James R. Jarboe, City Manager

FROM: Leon Smith, Director of Public Services Facility

DATE: October 14, 2008

RE: A1A Maintenance

As you know, the Florida Department of Transportation is planning to resurface SR A1A. They have contacted us stating they have concerns with the settlement in the roadway caused by our utility sewer system and have offered to perform the necessary repairs and provide a maintenance contract for \$69,400. If we were to use an outside contractor for this work, the estimated cost would be \$150,000 to \$200,000. Since we have been searching for the most cost effective way to perform routine duties within the City, I am recommending we accept this agreement. Not only does it spare the City the expense of repairing these locations, but provides for future improvements.



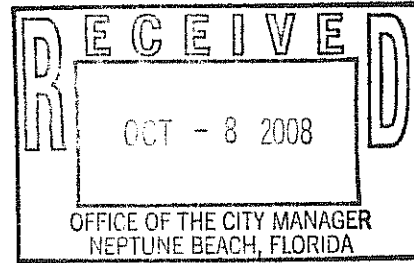
Florida Department of Transportation

CHARLIE CRIST
GOVERNOR

1109 South Marion Avenue
Lake City, Florida 32025-5874
vince.camp@dot.state.fl.us

STEPHANIE C. KOPELOUSOS
SECRETARY

October 6, 2008



Mr. James Jarboe
City Manager
City of Neptune Beach
116 1st St.
Neptune Beach, FL 32266

SUBJECT: UTILITY WORK BY CITY OF NEPTUNE BEACH ASSESSMENT
FPI – 403350-4-52-01
State Road – A1A
County – Duval
Resurface Mayport Rd from 9th Ave North

Dear Mr. Jarboe:

The enclosed documents have been developed and approved by the Department and are provided for your review of the proposed pavement repairs along A1A as discussed in our August meeting with your staff (see attached minutes). We have determined that nine locations along A1A that need to be repaired by injection of Polly Urethane grouting along the depressed locations as reflected in the enclosed table. These locations and the area in question have been reviewed and it is the Department's belief that all settlement in these areas are the direct result of the City's utility sewer system. Therefore, I am enclosing for your review the plan sheets which depict the areas identified for repair.

The estimated cost for these repairs using the Department established unit price maintenance contract is **\$69,400.00** (see exhibit A). In addition, the Department would include further improvements and items of work with-in the resurfacing plans of SR A1A to improve the overall surface restoration, but these cost would not be passed onto the City.

The Department is requesting your office provide us in writing by October 31, 2008, the City's position on this matter and willingness to compensate the Department for the above cost.

If there are any questions, please call Terri Carmichael at (386) 758-3738.

Sincerely,


H. Vince Camp
District Utility Administrator

xc: George Carpenter, P.E., Project Manager

EXHIBIT A

COST ESTIMATE FOR URTEK INJECTION AT 9 locations

MOBILIZATION:	\$ 400.00
VAC TRUCK	\$22,000.00 (10 days X \$2,200.00)
URTEK GROUTING	\$45,000.00 (estimate 5,000.00 lbs)
MAINTENCE OF TRAFFIC	<u>\$ 2,000.00</u>
	\$69,400.00

MEETING MINUTES

Attendee	Company	Contact Information
Vince Camp	FDOT	vince.camp@dot.state.fl.us
George Carpenter	FDOT	george.carpenter@dot.state.fl.us
Terri Carmichael	FDOT	terri.carmichael@dot.state.fl.us
Binay Prakash	FDOT	binay.prakash@dot.state.fl.us
Chandra Samakur	FDOT	chandra.samakur@state.fl.us
Bobby Hughes	Neptune Beach	bhughes@neptune-beach.com
Leon Smith	Neptune Beach	lsmith@neptune-beach.com
Jim French	Neptune Beach	jfrench@neptune-beach.com
Jim Jarboe	Neptune Beach	jarboe@neptune-beach.com
Steven Ramsey	Neptune Beach	sramsey@neptune-beach.com
Dan Blaydes	SRE, Inc.	dgblydes@comcast.net
Brian Alley	Connelly & Wicker Inc.	balley@cwieng.com
Danny Waltermyer	Connelly & Wicker Inc.	dwaltermyer@cwieng.com

Date: August 27, 2008, 10:30 AM to 12:00 PM

Location: Neptune Beach Public Works
Neptune Beach, FL

RE: Sanitary Sewer
SR A1A – Milling & Resurfacing and Signalization Improvements
Florida Department of Transportation
FIN IDs 403350-4-52-01, & 403350-3-52-01

The purpose of the meeting was to discuss the geotechnical report and corresponding repairs of the sanitary sewer that runs north-south in the parking and outside NB travel lanes of SR A1A in Neptune Beach. The pavement along the sewer line has experienced a significant amount of settlement since the sanitary sewer line was rehabilitated in 2003.

-
1. Vince Camp provided a brief description of the project history.
 2. Dan Blaydes gave an overview of the geotechnical report. Borings were done on 75-80% of the patched areas with 3-4 borings per patch. The soils show less than 90% compaction in many locations.
 3. Neptune Beach stated that the patches were originally extended two feet beyond the disturbed area and that the borings could have possibly been taken in this area.
 4. Binay Prakash of the FDOT stated that he will pin point areas that are in critical need of repair and provide a summary of those locations to Neptune Beach. Preliminary analysis indicates there are nine (9) critical locations along the sewer line where the blow count value was four (4) or less.
 5. Options to repair include chemical grouting, pressure grouting or replacing the pipe with an open cut trench and backfilling using mechanical compaction methods and flowable fill.

MEETING MINUTES

SR A1A - NEPTUNE BEACH SANITARY SEWER

August 27, 2008

Page 2 of 2

6. Neptune Beach believes the sanitary sewer line is in satisfactory condition, and the pavement failures are the result of poor compaction during the rehabilitation project in 2003 or failures within the FDOT's storm sewer system.
7. Neptune Beach stated that the City does not possess sufficient monetary funds at this time to complete the repairs.
8. FDOT is willing to work with Neptune Beach in order to develop a payment plan with the City. The Department will front the money for the repairs, and it will be Neptune Beach's responsibility to repay the Department. Neptune Beach will need to submit to FDOT all financial records in order to demonstrate the need for these arrangements.
9. Neptune Beach requested additional analysis occur demonstrating that the depressions in the pavement are due directly to the sewer line and not from loose background soils or from the storm sewer. FDOT will consider this and will be willing to participate in a cost share agreement if the storm sewer proves to be exacerbating the problem.
10. FDOT stated that the schedule is tight with Phase IV plans due in September, the Specifications submittal in December, and contract letting in April of 2009.

SR-A1A Sewer Line Remediation Areas

Boring No.	Approx. Station (ft)		Approx. Offset (ft)		Treatment Depth (ft)
	From	To	From	To	
B-7	217+92	218+12	26.5	35	6
B-16	223+16	223+41	25	35	8
B-17 & B-18	224+60	224+94	30	39	9
B-25	233+37	233+58	30.5	39	10
B-28	235+39	235+70	29	39	8
B-32	241+20	241+55	34	39	8
B-47	249+94	250+17	31	39	8
B-54	257+00	257+30	27	39	8

✓
 ✓
 ✓
 ✓
 ✓

B-16 → Below sewer?
 B-25 - Below sewer?

COMPONENTS OF CONTRACT PLANS SET
ROADWAY PLANS
SIGNING AND PAVEMENT MARKING PLANS

A DETAILED INDEX APPEARS ON THE KEY SHEET OF EACH COMPONENT

INDEX OF ROADWAY PLANS

SHEET NO.	SHEET DESCRIPTION
1	KEY SHEET
2-2A	SUMMARY OF PAY ITEMS
3-4	TYPICAL SECTION
5	GENERAL NOTES
6	SUMMARY OF QUANTITIES
7-9	PROJECT LAYOUT
10-38	ROADWAY PLANS
39	STORMWATER POLLUTION PREVENTION PLAN
40	TRAFFIC CONTROL PLANS

COVERING STANDARDS AND SPECIFICATIONS, DESIGN STANDARDS BASED BOOKS, AND STANDARD SPECIFICATIONS FOR ROAD AND BRIDGE CONSTRUCTION DATED 2003, AS AMENDED BY CONTRACT DOCUMENTS.

APPLICABLE DESIGN STANDARDS MODIFICATIONS: FH-108, FH-109, FH-110, FH-111, FH-112, FH-113, FH-114, FH-115, FH-116, FH-117, FH-118, FH-119, FH-120, FH-121, FH-122, FH-123, FH-124, FH-125, FH-126, FH-127, FH-128, FH-129, FH-130, FH-131, FH-132, FH-133, FH-134, FH-135, FH-136, FH-137, FH-138, FH-139, FH-140, FH-141, FH-142, FH-143, FH-144, FH-145, FH-146, FH-147, FH-148, FH-149, FH-150, FH-151, FH-152, FH-153, FH-154, FH-155, FH-156, FH-157, FH-158, FH-159, FH-160, FH-161, FH-162, FH-163, FH-164, FH-165, FH-166, FH-167, FH-168, FH-169, FH-170, FH-171, FH-172, FH-173, FH-174, FH-175, FH-176, FH-177, FH-178, FH-179, FH-180, FH-181, FH-182, FH-183, FH-184, FH-185, FH-186, FH-187, FH-188, FH-189, FH-190, FH-191, FH-192, FH-193, FH-194, FH-195, FH-196, FH-197, FH-198, FH-199, FH-200, FH-201, FH-202, FH-203, FH-204, FH-205, FH-206, FH-207, FH-208, FH-209, FH-210, FH-211, FH-212, FH-213, FH-214, FH-215, FH-216, FH-217, FH-218, FH-219, FH-220, FH-221, FH-222, FH-223, FH-224, FH-225, FH-226, FH-227, FH-228, FH-229, FH-230, FH-231, FH-232, FH-233, FH-234, FH-235, FH-236, FH-237, FH-238, FH-239, FH-240, FH-241, FH-242, FH-243, FH-244, FH-245, FH-246, FH-247, FH-248, FH-249, FH-250, FH-251, FH-252, FH-253, FH-254, FH-255, FH-256, FH-257, FH-258, FH-259, FH-260, FH-261, FH-262, FH-263, FH-264, FH-265, FH-266, FH-267, FH-268, FH-269, FH-270, FH-271, FH-272, FH-273, FH-274, FH-275, FH-276, FH-277, FH-278, FH-279, FH-280, FH-281, FH-282, FH-283, FH-284, FH-285, FH-286, FH-287, FH-288, FH-289, FH-290, FH-291, FH-292, FH-293, FH-294, FH-295, FH-296, FH-297, FH-298, FH-299, FH-300, FH-301, FH-302, FH-303, FH-304, FH-305, FH-306, FH-307, FH-308, FH-309, FH-310, FH-311, FH-312, FH-313, FH-314, FH-315, FH-316, FH-317, FH-318, FH-319, FH-320, FH-321, FH-322, FH-323, FH-324, FH-325, FH-326, FH-327, FH-328, FH-329, FH-330, FH-331, FH-332, FH-333, FH-334, FH-335, FH-336, FH-337, FH-338, FH-339, FH-340, FH-341, FH-342, FH-343, FH-344, FH-345, FH-346, FH-347, FH-348, FH-349, FH-350, FH-351, FH-352, FH-353, FH-354, FH-355, FH-356, FH-357, FH-358, FH-359, FH-360, FH-361, FH-362, FH-363, FH-364, FH-365, FH-366, FH-367, FH-368, FH-369, FH-370, FH-371, FH-372, FH-373, FH-374, FH-375, FH-376, FH-377, FH-378, FH-379, FH-380, FH-381, FH-382, FH-383, FH-384, FH-385, FH-386, FH-387, FH-388, FH-389, FH-390, FH-391, FH-392, FH-393, FH-394, FH-395, FH-396, FH-397, FH-398, FH-399, FH-400, FH-401, FH-402, FH-403, FH-404, FH-405, FH-406, FH-407, FH-408, FH-409, FH-410, FH-411, FH-412, FH-413, FH-414, FH-415, FH-416, FH-417, FH-418, FH-419, FH-420, FH-421, FH-422, FH-423, FH-424, FH-425, FH-426, FH-427, FH-428, FH-429, FH-430, FH-431, FH-432, FH-433, FH-434, FH-435, FH-436, FH-437, FH-438, FH-439, FH-440, FH-441, FH-442, FH-443, FH-444, FH-445, FH-446, FH-447, FH-448, FH-449, FH-450, FH-451, FH-452, FH-453, FH-454, FH-455, FH-456, FH-457, FH-458, FH-459, FH-460, FH-461, FH-462, FH-463, FH-464, FH-465, FH-466, FH-467, FH-468, FH-469, FH-470, FH-471, FH-472, FH-473, FH-474, FH-475, FH-476, FH-477, FH-478, FH-479, FH-480, FH-481, FH-482, FH-483, FH-484, FH-485, FH-486, FH-487, FH-488, FH-489, FH-490, FH-491, FH-492, FH-493, FH-494, FH-495, FH-496, FH-497, FH-498, FH-499, FH-500, FH-501, FH-502, FH-503, FH-504, FH-505, FH-506, FH-507, FH-508, FH-509, FH-510, FH-511, FH-512, FH-513, FH-514, FH-515, FH-516, FH-517, FH-518, FH-519, FH-520, FH-521, FH-522, FH-523, FH-524, FH-525, FH-526, FH-527, FH-528, FH-529, FH-530, FH-531, FH-532, FH-533, FH-534, FH-535, FH-536, FH-537, FH-538, FH-539, FH-540, FH-541, FH-542, FH-543, FH-544, FH-545, FH-546, FH-547, FH-548, FH-549, FH-550, FH-551, FH-552, FH-553, FH-554, FH-555, FH-556, FH-557, FH-558, FH-559, FH-560, FH-561, FH-562, FH-563, FH-564, FH-565, FH-566, FH-567, FH-568, FH-569, FH-570, FH-571, FH-572, FH-573, FH-574, FH-575, FH-576, FH-577, FH-578, FH-579, FH-580, FH-581, FH-582, FH-583, FH-584, FH-585, FH-586, FH-587, FH-588, FH-589, FH-590, FH-591, FH-592, FH-593, FH-594, FH-595, FH-596, FH-597, FH-598, FH-599, FH-600, FH-601, FH-602, FH-603, FH-604, FH-605, FH-606, FH-607, FH-608, FH-609, FH-610, FH-611, FH-612, FH-613, FH-614, FH-615, FH-616, FH-617, FH-618, FH-619, FH-620, FH-621, FH-622, FH-623, FH-624, FH-625, FH-626, FH-627, FH-628, FH-629, FH-630, FH-631, FH-632, FH-633, FH-634, FH-635, FH-636, FH-637, FH-638, FH-639, FH-640, FH-641, FH-642, FH-643, FH-644, FH-645, FH-646, FH-647, FH-648, FH-649, FH-650, FH-651, FH-652, FH-653, FH-654, FH-655, FH-656, FH-657, FH-658, FH-659, FH-660, FH-661, FH-662, FH-663, FH-664, FH-665, FH-666, FH-667, FH-668, FH-669, FH-670, FH-671, FH-672, FH-673, FH-674, FH-675, FH-676, FH-677, FH-678, FH-679, FH-680, FH-681, FH-682, FH-683, FH-684, FH-685, FH-686, FH-687, FH-688, FH-689, FH-690, FH-691, FH-692, FH-693, FH-694, FH-695, FH-696, FH-697, FH-698, FH-699, FH-700, FH-701, FH-702, FH-703, FH-704, FH-705, FH-706, FH-707, FH-708, FH-709, FH-710, FH-711, FH-712, FH-713, FH-714, FH-715, FH-716, FH-717, FH-718, FH-719, FH-720, FH-721, FH-722, FH-723, FH-724, FH-725, FH-726, FH-727, FH-728, FH-729, FH-730, FH-731, FH-732, FH-733, FH-734, FH-735, FH-736, FH-737, FH-738, FH-739, FH-740, FH-741, FH-742, FH-743, FH-744, FH-745, FH-746, FH-747, FH-748, FH-749, FH-750, FH-751, FH-752, FH-753, FH-754, FH-755, FH-756, FH-757, FH-758, FH-759, FH-760, FH-761, FH-762, FH-763, FH-764, FH-765, FH-766, FH-767, FH-768, FH-769, FH-770, FH-771, FH-772, FH-773, FH-774, FH-775, FH-776, FH-777, FH-778, FH-779, FH-780, FH-781, FH-782, FH-783, FH-784, FH-785, FH-786, FH-787, FH-788, FH-789, FH-790, FH-791, FH-792, FH-793, FH-794, FH-795, FH-796, FH-797, FH-798, FH-799, FH-800, FH-801, FH-802, FH-803, FH-804, FH-805, FH-806, FH-807, FH-808, FH-809, FH-810, FH-811, FH-812, FH-813, FH-814, FH-815, FH-816, FH-817, FH-818, FH-819, FH-820, FH-821, FH-822, FH-823, FH-824, FH-825, FH-826, FH-827, FH-828, FH-829, FH-830, FH-831, FH-832, FH-833, FH-834, FH-835, FH-836, FH-837, FH-838, FH-839, FH-840, FH-841, FH-842, FH-843, FH-844, FH-845, FH-846, FH-847, FH-848, FH-849, FH-850, FH-851, FH-852, FH-853, FH-854, FH-855, FH-856, FH-857, FH-858, FH-859, FH-860, FH-861, FH-862, FH-863, FH-864, FH-865, FH-866, FH-867, FH-868, FH-869, FH-870, FH-871, FH-872, FH-873, FH-874, FH-875, FH-876, FH-877, FH-878, FH-879, FH-880, FH-881, FH-882, FH-883, FH-884, FH-885, FH-886, FH-887, FH-888, FH-889, FH-890, FH-891, FH-892, FH-893, FH-894, FH-895, FH-896, FH-897, FH-898, FH-899, FH-900, FH-901, FH-902, FH-903, FH-904, FH-905, FH-906, FH-907, FH-908, FH-909, FH-910, FH-911, FH-912, FH-913, FH-914, FH-915, FH-916, FH-917, FH-918, FH-919, FH-920, FH-921, FH-922, FH-923, FH-924, FH-925, FH-926, FH-927, FH-928, FH-929, FH-930, FH-931, FH-932, FH-933, FH-934, FH-935, FH-936, FH-937, FH-938, FH-939, FH-940, FH-941, FH-942, FH-943, FH-944, FH-945, FH-946, FH-947, FH-948, FH-949, FH-950, FH-951, FH-952, FH-953, FH-954, FH-955, FH-956, FH-957, FH-958, FH-959, FH-960, FH-961, FH-962, FH-963, FH-964, FH-965, FH-966, FH-967, FH-968, FH-969, FH-970, FH-971, FH-972, FH-973, FH-974, FH-975, FH-976, FH-977, FH-978, FH-979, FH-980, FH-981, FH-982, FH-983, FH-984, FH-985, FH-986, FH-987, FH-988, FH-989, FH-990, FH-991, FH-992, FH-993, FH-994, FH-995, FH-996, FH-997, FH-998, FH-999, FH-1000.

STATE OF FLORIDA
DEPARTMENT OF TRANSPORTATION

CONTRACT PLANS

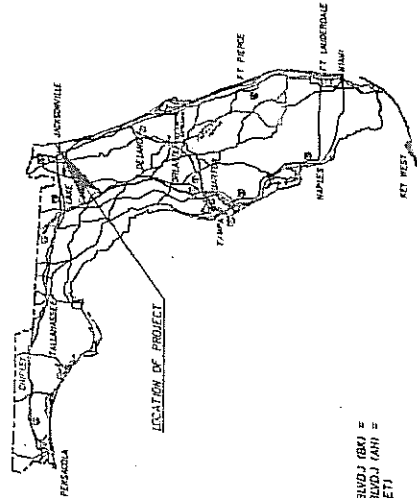
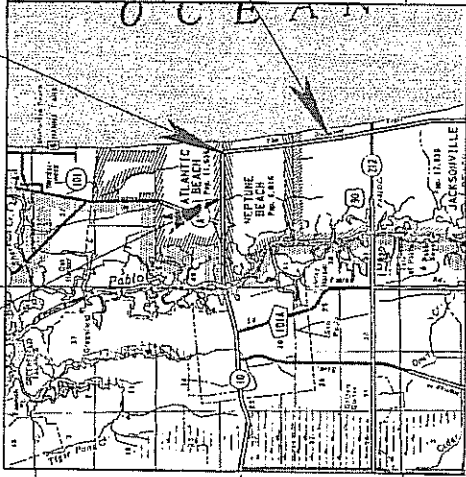
FINANCIAL PROJECT ID 403350-4-52-01

DUVAL COUNTY (72100)
STATE ROAD NO. A1A

STATION EDITION
STA. 20+00 TO ATLANTIC BEACH (80) =
STA. 30+00 TO ATLANTIC BEACH (141) =
STA. 27+00 TO 30+00 (141) =
STA. 27+00 TO 30+00 (141) =

BEGIN PROJECT
STA. 30+00.00
N.P. 14-573

END PROJECT
STA. 27+00.00
N.P. 14-364



ROADWAY SHOP DRAWINGS TO BE SUBMITTED TO: CAROL C. SREAGER, P.E. PROJECT MANAGER CONNOLLY & WICKER INC. 1000 SKINNER LAKE DR., SUITE 500 JACKSONVILLE, FL. 32246

PLANS PREPARED BY:
CONNOLLY & WICKER INC.
1000 SKINNER LAKE DR., SUITE 500
JACKSONVILLE, FL. 32246
PHONE 285-1010
FAX 285-1010
VENDOR NO. 592347300
CA NO. 3530
CONTRACT NO. C-1029

NOTES:
THIS PROJECT IS TO BE LET TO CONTRACT WITH FINANCIAL PROJECT ID 403350-4-52-01
NOTE: THE SCALE OF THESE PLANS MAY HAVE CHANGED DUE TO REPRODUCTION.

PHASE III SUBMITTAL
OCTOBER 2007

LENGTH OF PROJECT	
	MILES
ROADWAY	15,790.00
BRIDGES	2.991
NET LENGTH OF PROJECT	15,790.00
EXCEPTIONS	2.991
GROSS LENGTH OF PROJECT	15,790.00
	2.991

FDOT PROJECT MANAGER: GEORGE CARPENTER, P.E.

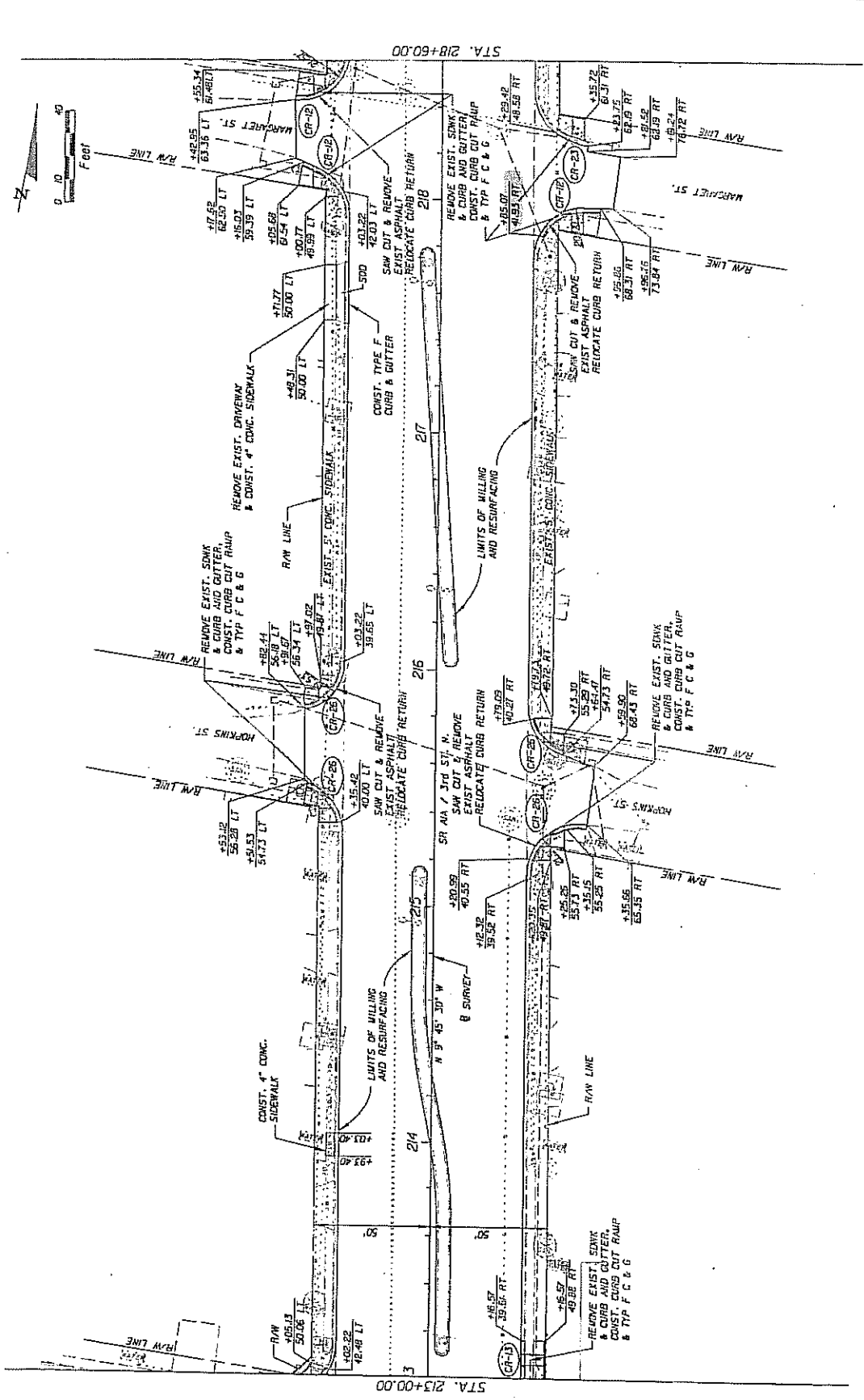
DATE	REVISION DESCRIPTION

ROADWAY PLANS
ENGINEER OF RECORD: DONALD C. SMITZER, P.E.
P.E. NO. 55009
FISCAL YEAR 09
SHEET NO. 1

UTILITIES

NOTICE: The official record of this plan sheet is the electronic file signed & sealed under rule 68B-21.003, F.A.C.

NOTICE: The official record of this plan sheet is the electronic file signed & sealed under rule 61G5-21.003, F.A.C.

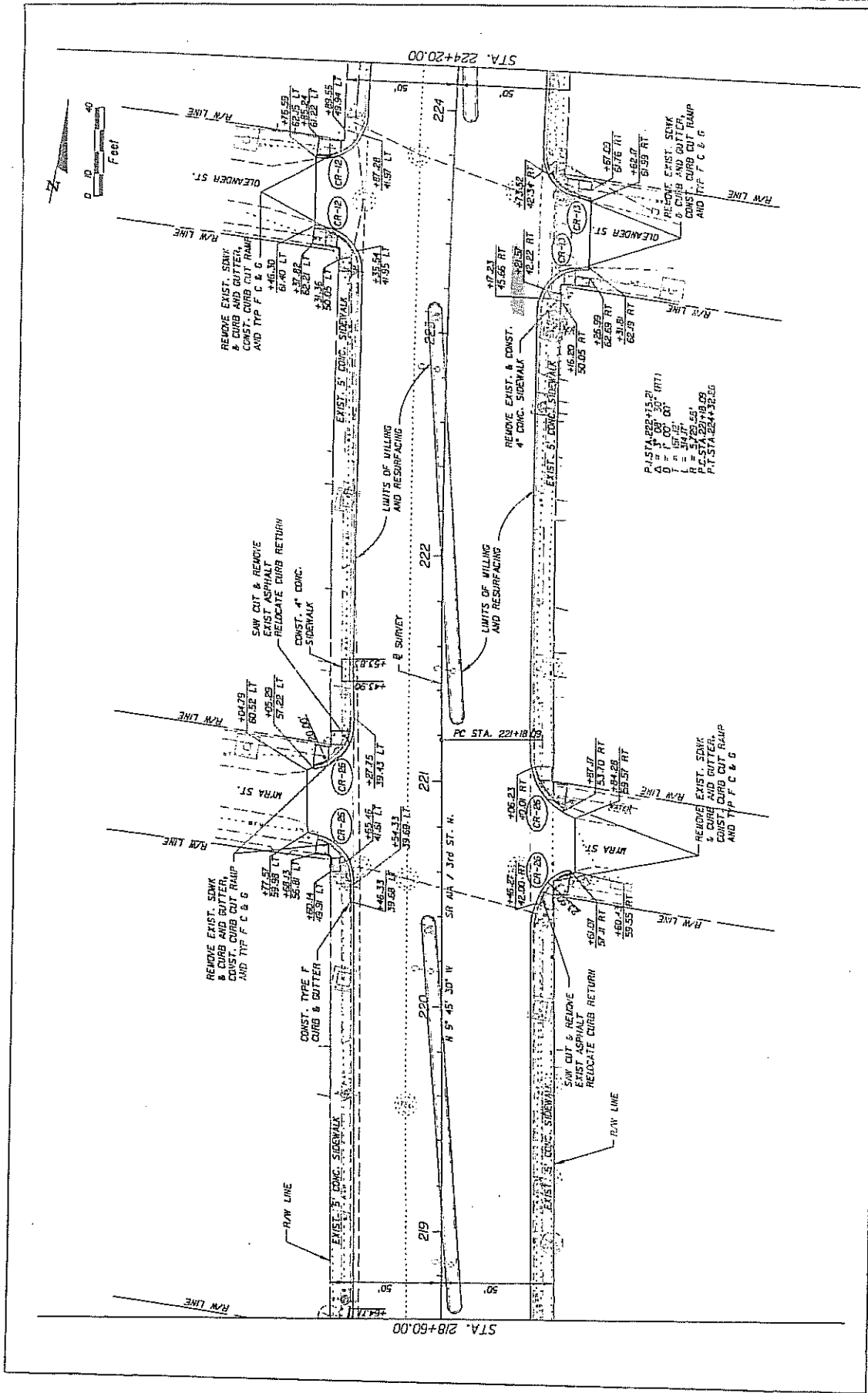


DATE	BY	DESCRIPTION	REVISIONS

ENGINEER David L. Risher, P.E. P.L. No. 8808		STATE OF FLORIDA DEPARTMENT OF TRANSPORTATION	
CONSULTING ENGINEER Connelly & Wicker Inc. 2515 N. W. 11th St., Suite 100 Fort Lauderdale, FL 33304 (954) 333-1111		FINANCIAL PROJECT ID: 403350-4-52-01	
ROAD NO.	SR A1A	COUNTY	DUVAL

SHEET NO.	28
PLAN (19) SR A1A - 3rd STREET	

NOTICE: The official record of this plan sheet is the electronic file signed & sealed under rule 6B15-23.003, F.A.C.

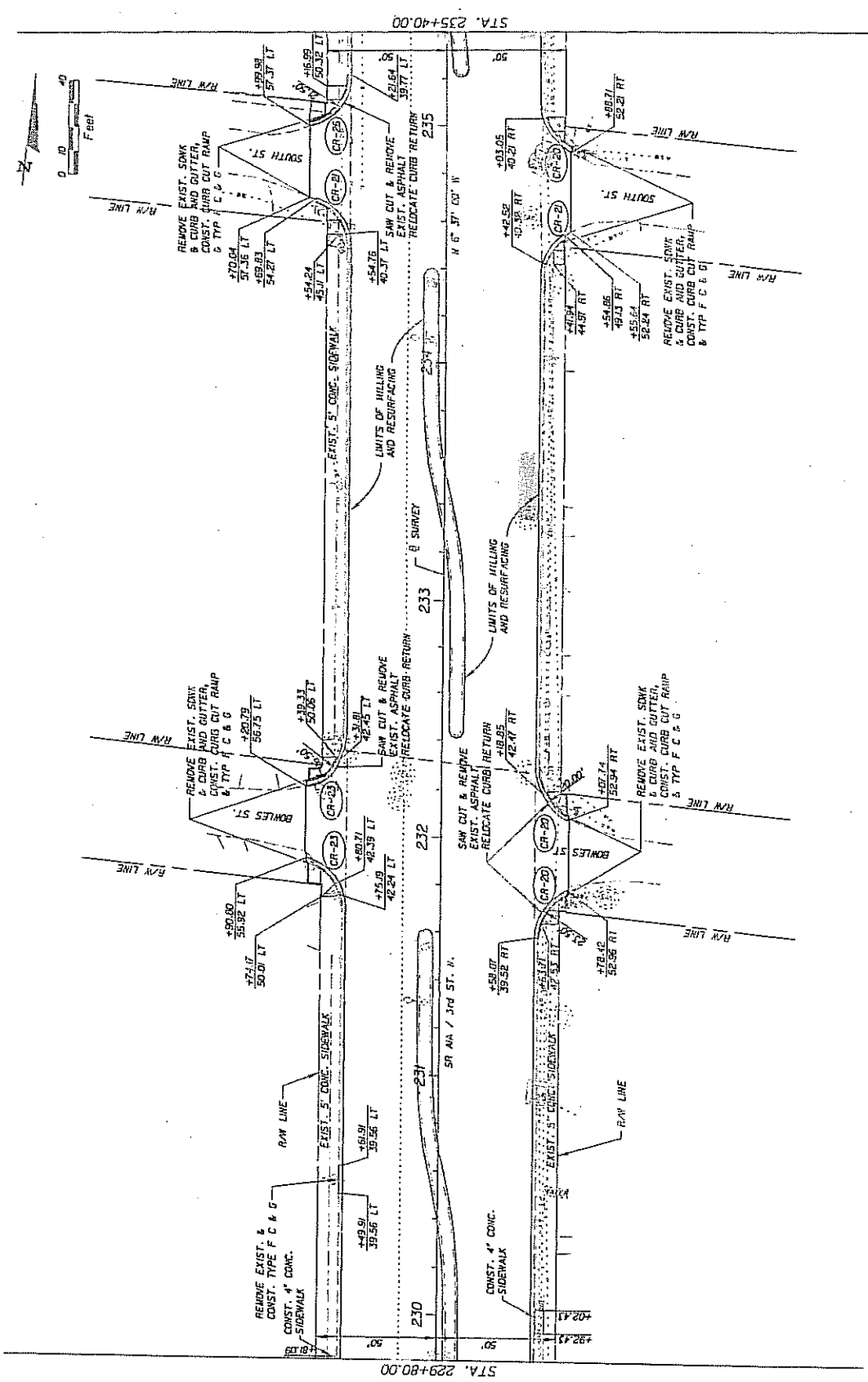


DATE	BY	DESCRIPTION	REVISIONS
DATE	BY	DESCRIPTION	REVISIONS

 Connelly & Wicker Inc. Consulting Engineers 10000 W. US HWY 190, SUITE 100 JACONVILLE, FL 32818 PH: 407.250.1100 FAX: 407.250.1101	STATES OF FLORIDA DEPARTMENT OF TRANSPORTATION ROAD NO. SR A1A COUNTY DUAL FINANCIAL PROJECT ID 403350-4-52-01	PLAN (20) SR A1A - 5th STREET	SHEET NO. 29
--	--	----------------------------------	--------------

6/21/2021 8:42:40 AM W:\Projects\SR A1A\SR A1A - 5th Street.dwg

NOTICE: The official record of this plan sheet is the electronic file signed & sealed under file 615-23,003, F.A.C.



DATE	BY	DESCRIPTION	REVISIONS

STATE OF FLORIDA DEPARTMENT OF TRANSPORTATION ROAD NO. SR A1A COUNTY DUVAL FINANCIAL PROJECT ID. 403350-4-52-01	ENGINEER David C. Baker, P.E. P.L. No. 3810 CONSULTING ENGINEER COMMUNITY & VICKER INC. 5000 BUCKINGHAM BLVD., SUITE 200 JACKSONVILLE, FL 32216
---	---

PLAN (22) SR A1A - 3rd STREET	SHEET NO. 31
----------------------------------	--------------

NOTICE: The official record of this plan sheet is the electronic file signed & sealed under rule 61G5-23.003, F.A.C.

SHEET NO. 32

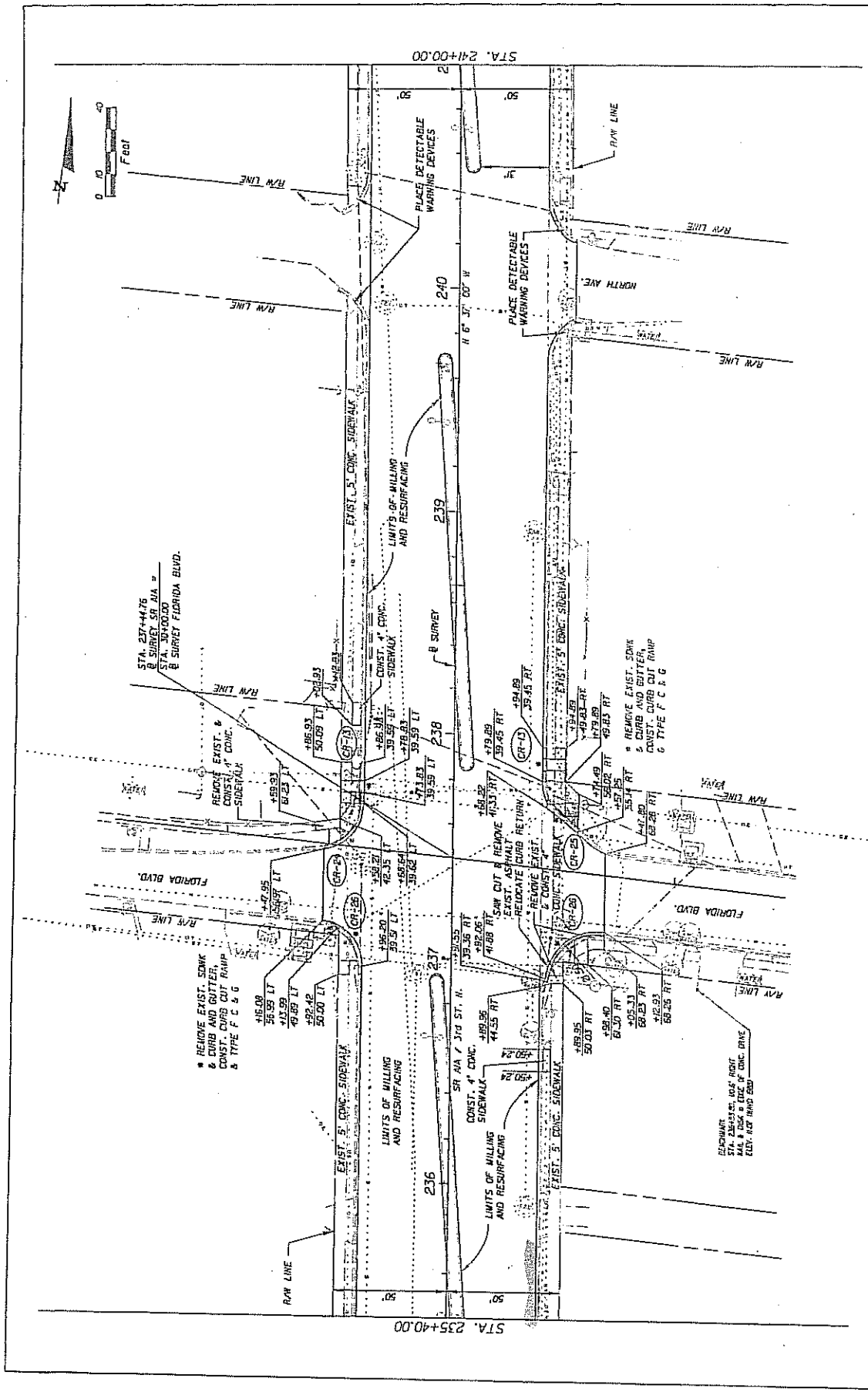
PLAN (25)
SR A1A - 3rd STREET

STATES OF FLORIDA
DEPARTMENT OF TRANSPORTATION
ROAD NO. COUNTY FINANCIAL PROJECT ID
SR A1A DUVAL 403350-1-52-01

Engineer of Record:
David C. Egan, P.E.
1414 W. 19th St.
Gainesville, FL 32609
CONVEYING ENGINEER:
1000 E. 1st St., Suite 100
Gainesville, FL 32609
CONVEYING ENGINEER:
1000 E. 1st St., Suite 100
Gainesville, FL 32609

CONVEYING ENGINEER:
Connelly & Wickert, Inc.
1000 E. 1st St., Suite 100
Gainesville, FL 32609

DATE	BY	DESCRIPTION



STA. 237+44.76
B SURVEY SR A1A =
STA. 30+00.00
B SURVEY FLORIDA BLVD.

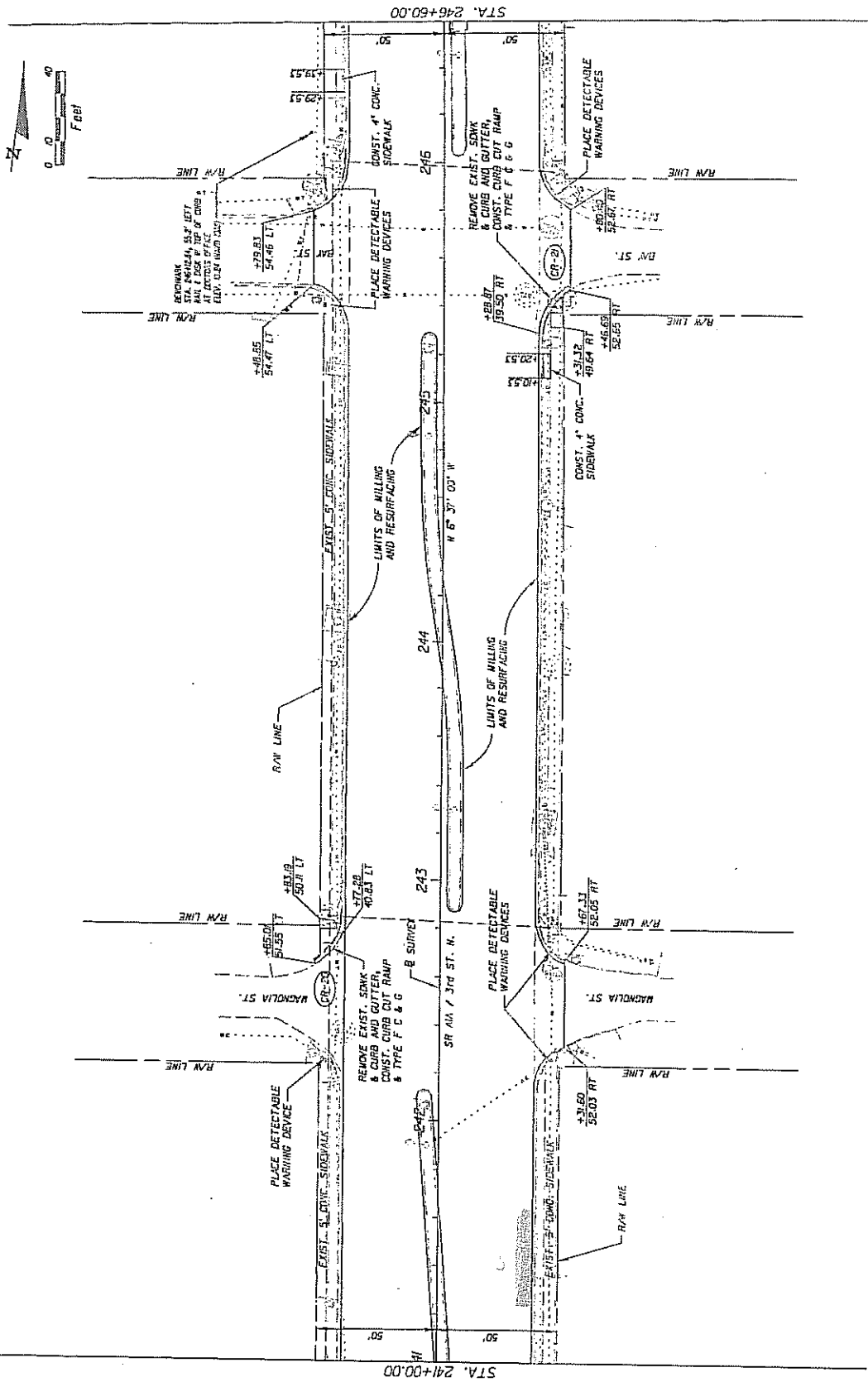
REMOVE EXIST. SOWK
& CURB AND GUTTER,
CONST. CURB CUT RAMP
& TYPE F C & G

ELEVATION
STA. 236+50.00, MAX. RIGHT
SIDE OF EXIST. CONC. DRIVE
ELEV. 102' 0" (102' 0" + 0.00)

STA. 235+40.00

STA. 241+00.00

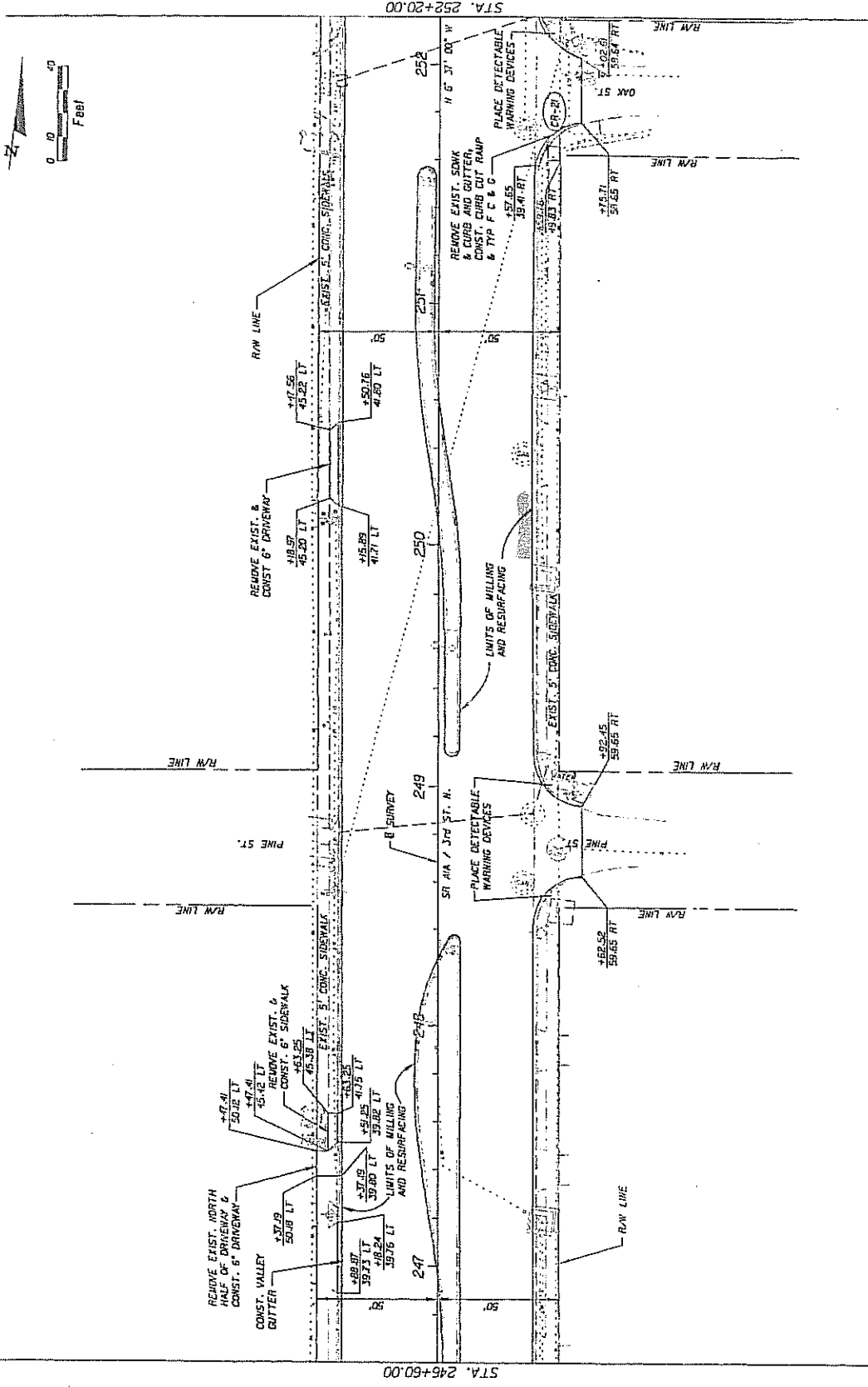
NOTICE: The official record of this plan sheet is the electronic file signed & sealed under rule 66G5-23.003, F.A.C.



DATE	BY	REVISION	DESCRIPTION

		STATE OF FLORIDA DEPARTMENT OF TRANSPORTATION FINANCIAL PROJECT ID
Connelly & Wicker Inc. Consulting Engineers 1115 S. Palm Ave., Suite 100 Fort Lauderdale, FL 33304 Phone: (954) 571-1111 Fax: (954) 571-1111	FIELD NO. SR A1A	COUNTY DUVAL
SR A1A - 5th STREET		SHEET NO. 33

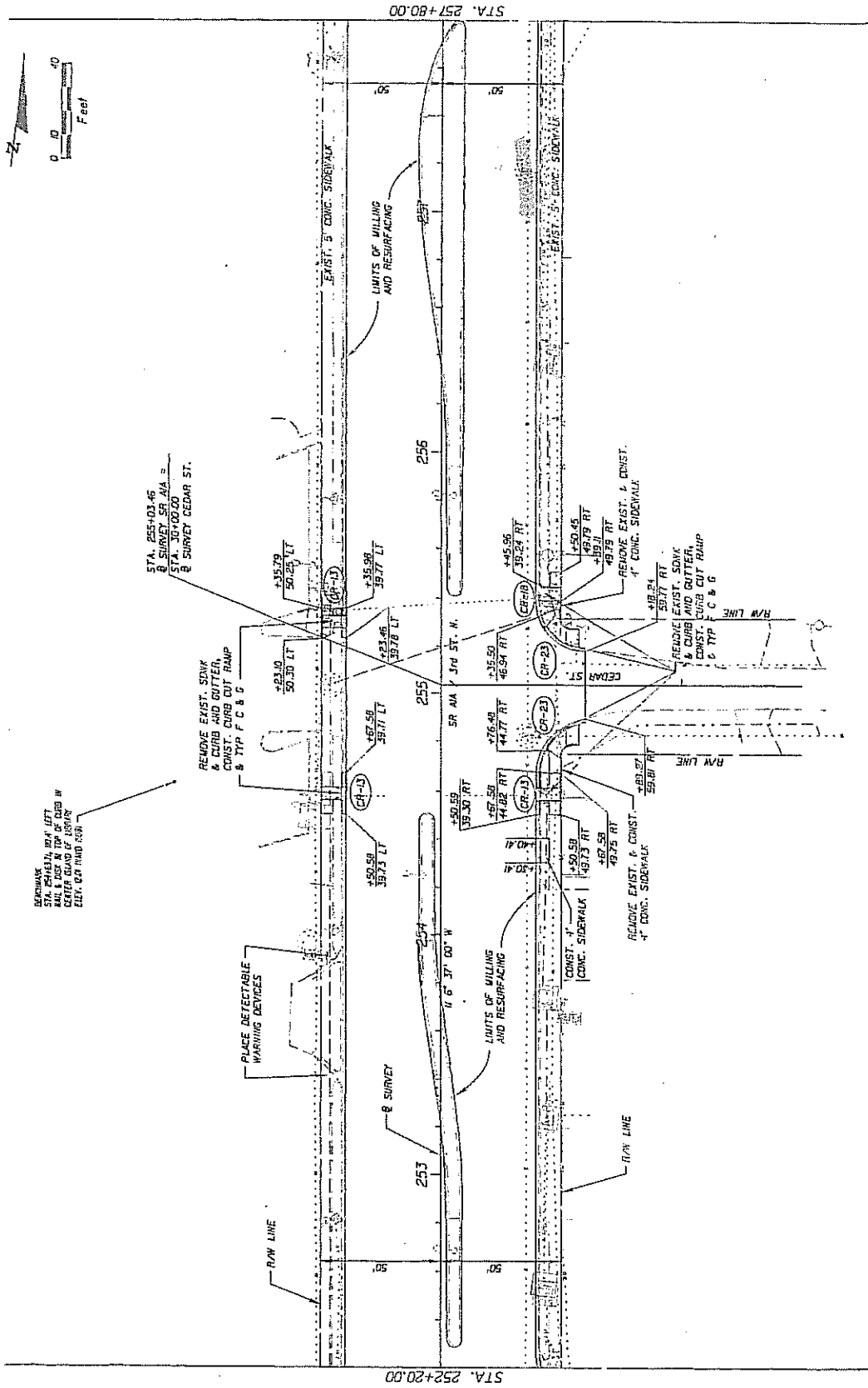
NOTICE: The official record of this plan sheet is the electronic file signed & sealed under rule 6815-23.003, F.A.C.



REVISIONS		DESCRIPTION	
DATE	BY	DATE	BY

CONNOLLY & WICKER INC. ENGINEERS & ARCHITECTS 10000 W. BOULEVARD, SUITE 200 BOCA RATON, FL 33434 TEL: 561-991-1100 FAX: 561-991-1101		STATE OF FLORIDA DEPARTMENT OF TRANSPORTATION FINANCE PROJECT ID: 403350-4-52-C1	
PROJECT NO: SR A1A COUNTY: DUVALL	SHEET NO: 34	PLAN (25) SR A1A - 5th STREET	

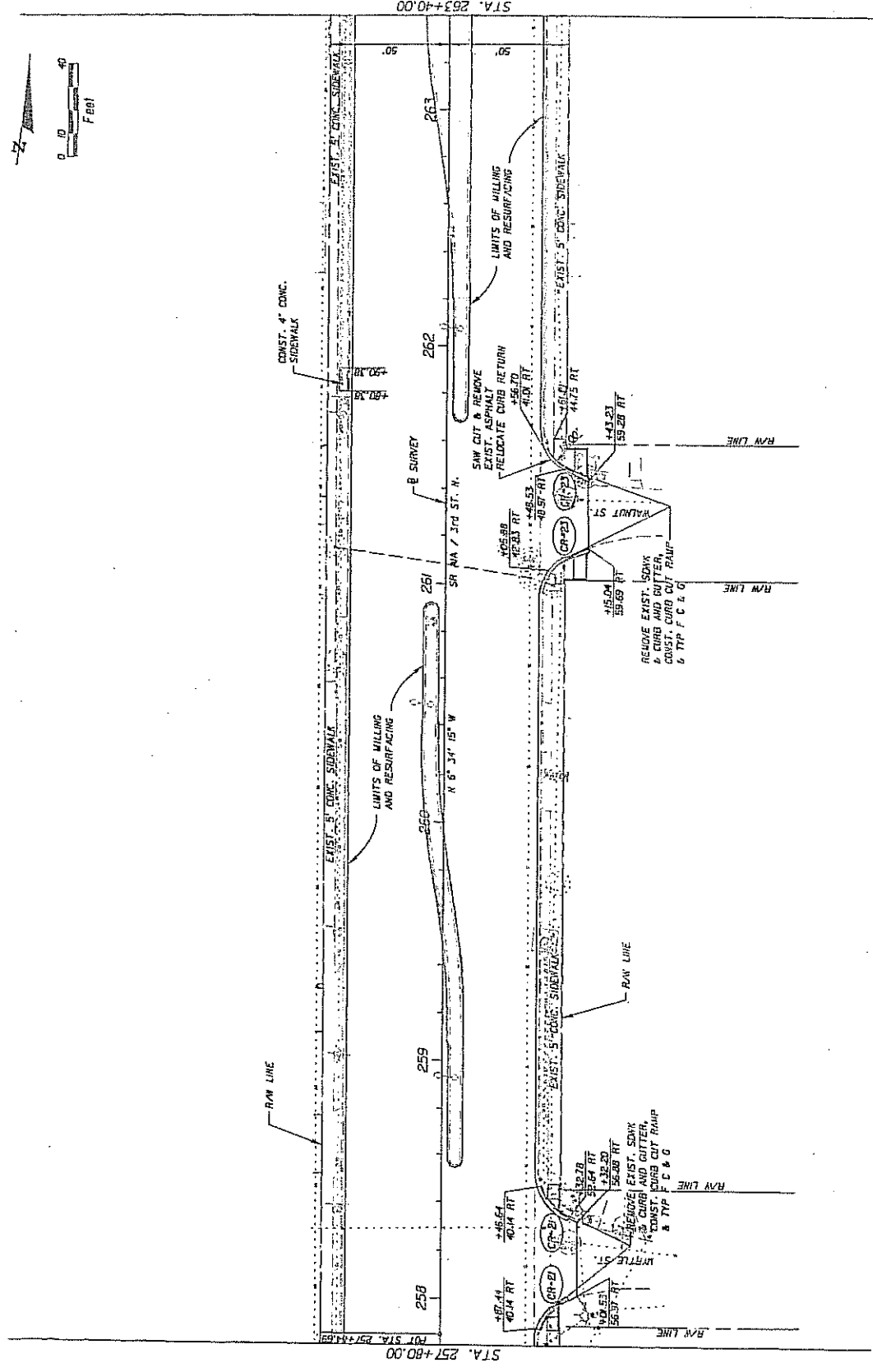
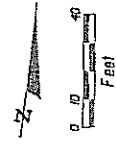
NOTICE: The official record of this plan sheet is the electronic file signed & sealed under rule 6C15-23.003, F.A.C.



NO.	DATE	BY	REVISIONS

CONWAY Connelly & Wickel Inc. Consulting Engineers 1000 N. W. 11th St., Suite 100 Ft. Lauderdale, FL 33304		STATE OF FLORIDA DEPARTMENT OF TRANSPORTATION ROAD NO. SR A1A COUNTY DUVAL FINANCIAL PROJECT ID 403350-4-52-01	
Engineer of Record: Dave C. Connelly, P.E. License No. 8018		PROJECT NO. SR A1A - 5th STREET SHEET NO. 35	

NOTICE: The official record of this plan sheet is the electronic file signed & sealed under rule 61G15-23.003, F.A.C.

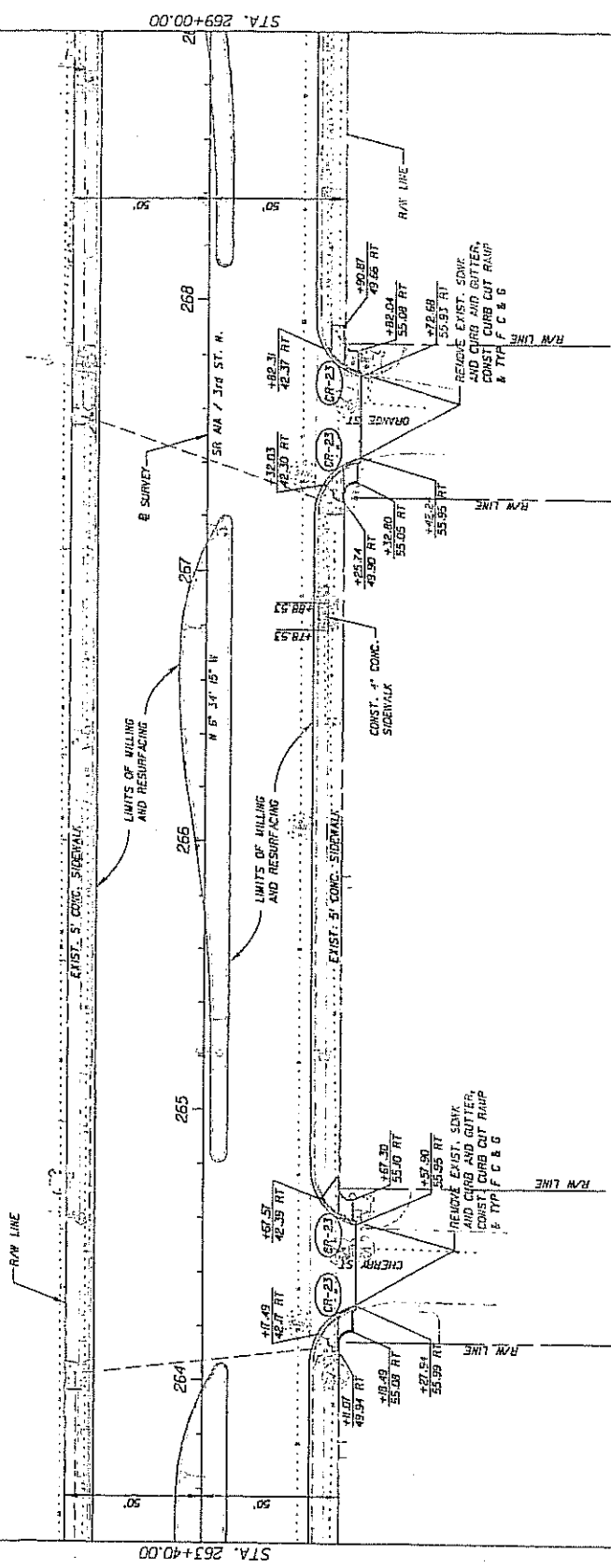
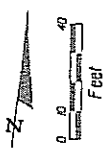


DATE	BY	DESCRIPTION	REVISIONS	DATE	BY	DESCRIPTION

CONNOLLY & WICKER INC. 10200 BUNNELL LANE D. BOULEVARD JACKSONVILLE, FL 32214 904.248.2800 FAX 904.248.2801		Engineer of Record P.E. No. 10108 F.L. No. 10108	FINANCIAL PROJECT ID 403350-4-52-01
ROAD NO. SR A1A	COUNTY DUVAL	STATE OF FLORIDA DEPARTMENT OF TRANSPORTATION	SHEET NO. 36

PLAN (27)
 SR A1A - 5th STREET

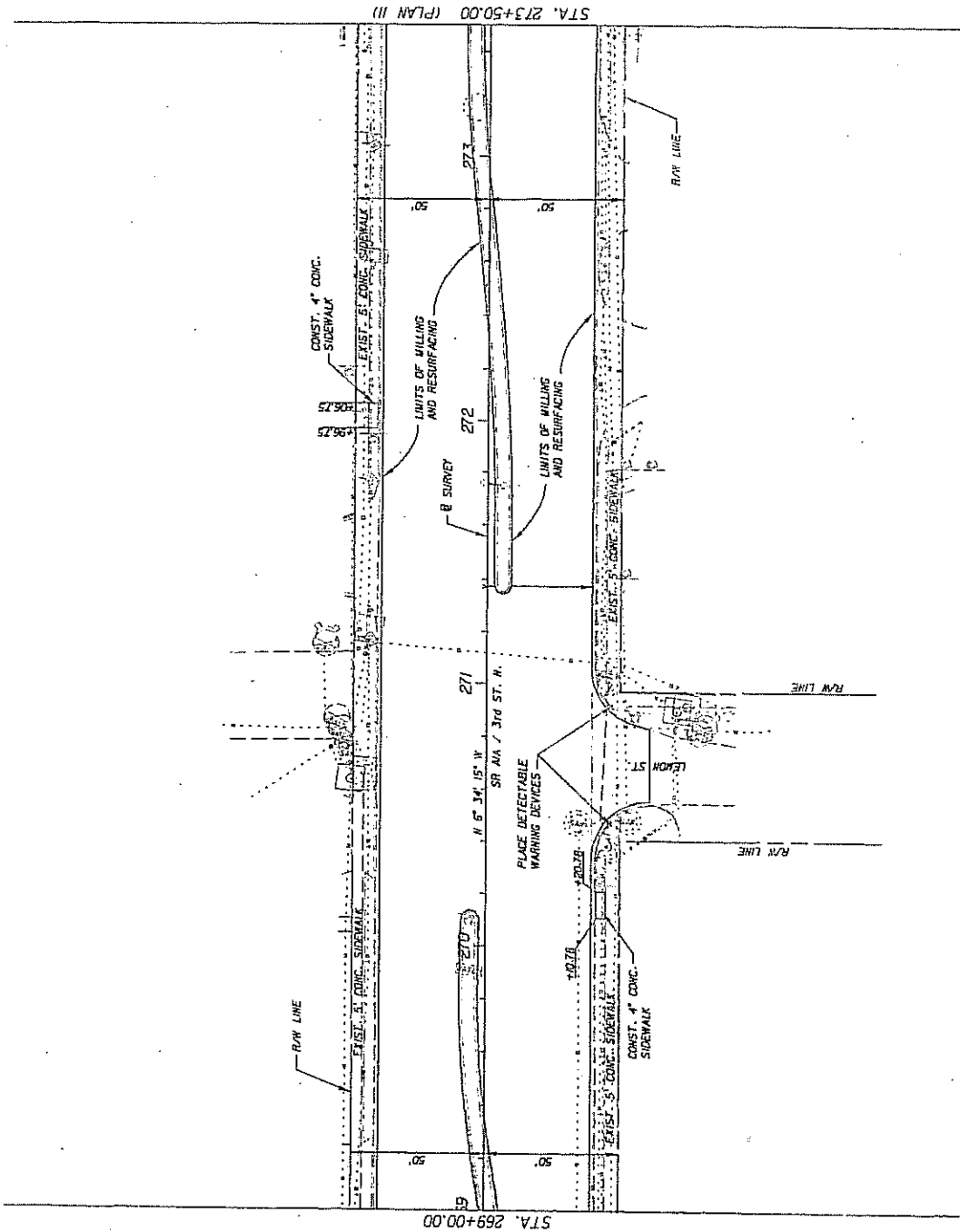
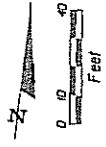
NOTICE: The official record of this plan sheet is the electronic file signed & sealed under rule 6B15-23.003, F.A.C.



DATE	BY	DESCRIPTION	REVISIONS	DATE	BY	DESCRIPTION

<p>1000 Broward Lane, Suite 400 Fort Lauderdale, FL 33304 Tel: 754.331.0001</p>	<p>Connelly & Wicker Inc. Consulting Engineers P.E. No. 18108 P.E. No. 18109</p>	<p>SR A1A DUVAL</p>	<p>EMBIT DUVAL</p>	<p>403350-4-52-01</p>
<p>STATE OF FLORIDA DEPARTMENT OF TRANSPORTATION</p>		<p>SR A1A - 3rd STREET</p>	<p>PLAN (28)</p>	<p>SHEET NO. 37</p>

NOTICE: The official record of this plan sheet is the electronic file signed & sealed under rule 65B-23.003, F.A.C.



DATE	BY	DESCRIPTION	REVISIONS	DATE	BY	DESCRIPTION

ENGINEER AT LARGE David C. Sherris, P.E. FL PE No. 9819		STATE OF FLORIDA DEPARTMENT OF TRANSPORTATION	
CONSULTING ENGINEER Connelly & Wickler Inc. 1011 N. W. 10th St., Suite 100 Ft. Lauderdale, FL 33304		ROAD NO. SR A1A	COUNTY DUVAL
FINANCIAL PROJECT NO. 403350-4-52-01		SHEET NO. 38	

PLAN (39)
 SR A1A - 3rd STREET
 STA. 269+00.00 (PLAN II) STA. 273+50.00 (PLAN III)